

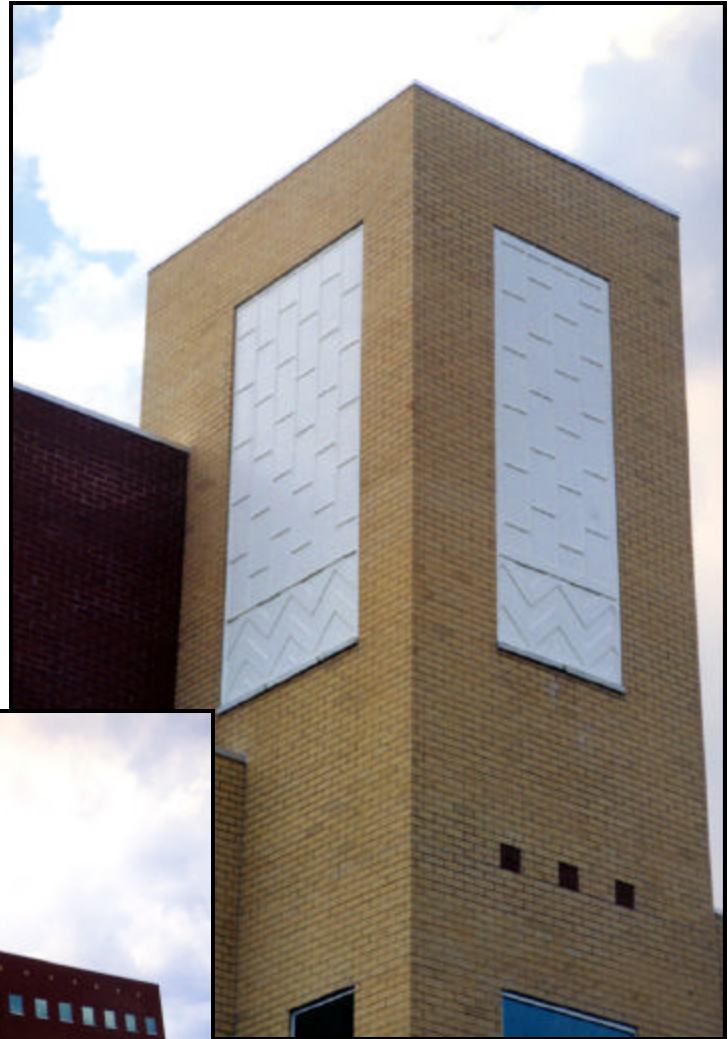
PROJECT PROFILE

DECORATIVE PANELS FOR CELLULAR TOWER
SEMINOLE COUNTY SHERIFFS' OFFICE
SANFORD, FLORIDA

The new building for the Sheriff's and Department of Public Safety Offices is not only unique architecturally, but functionally as well.

Hidden behind the decorative panels on the brick tower are several cellular and PCS antennae.

Fiberglass Specialties fabricated the panels, which are designed to meet stringent Florida wind load requirements, with all composite reinforcement to prevent RF interference.



antenna
inside!



FIBERGLASS
SPECIALTIES
INCORPORATED

"Manufacturers of Quality Architectural Fiberglass Products"